

KEY

- Modelled Change in 2037 PM2.5 Concentrations with 2037 Pre-Submission Local Plan ($\mu\text{g}/\text{m}^3$)
 - -0.1 to 0.1
- Modelled Road Links
- WBC Administrative Area



Client:
West Berkshire Council

Project:
West Berkshire Council Pre-Submission Local Plan

Title:
Modelled Change in 2037 PM2.5 Concentrations with 2037 Pre-Submission Local Plan - North-West of Newbury

Figure: 8-272 Drawn: AJ
 Date: 23/12/2022 Checked: JMR
 Scale: 1:25,000 Approved: AT

File Location: C:\Users\alexj\Documents\West Berks Local Plan\GIS\West Berks - Cut Down File for Human Figures.qgz
Created by: alexj

Contains Ordnance Survey data © Crown copyright and database right 2022.



KEY

- Modelled Change in 2037 PM2.5 Concentrations with 2037 Pre-Submission Local Plan ($\mu\text{g}/\text{m}^3$)
 - 0.1 to 0.1
- Modelled Road Links
- WBC Administrative Area



Client:
West Berkshire Council

Project:
West Berkshire Council Pre-Submission Local Plan

Title:
Modelled Change in 2037 PM2.5 Concentrations with 2037 Pre-Submission Local Plan - A339/M4 Interchange

Figure: 8-273 Drawn: AJ
 Date: 23/12/2022 Checked: JMR
 Scale: 1:12,500 Approved: AT

File Location: C:\Users\alexj\Documents\West Berks Local Plan\GIS\West Berks - Cut Down File for Human Figures.qg
 Created by: alexj



KEY

Modelled Change in 2037 PM2.5 Concentrations with 2037 Pre-Submission Local Plan ($\mu\text{g}/\text{m}^3$)

● -0.1 to 0.1

— Modelled Road Links

□ WBC Administrative Area



Client:

West Berkshire Council

Project:

West Berkshire Council Pre-Submission Local Plan

Title:

Modelled Change in 2037 PM2.5 Concentrations with 2037 Pre-Submission Local Plan - Hermitage

Figure: 8-274

Drawn: AJ

Date: 23/12/2022

Checked: JMR

Scale: 1:15,000

Approved: AT

File Location: C:\Users\alexj\Documents\West Berks Local Plan\GIS\West Berks - Cut Down File for Human Figures.qgx
Created by: alexj

Contains Ordnance Survey data © Crown copyright and database right 2022.



KEY

- Modelled Change in 2037 PM2.5 Concentrations with 2037 Pre-Submission Local Plan ($\mu\text{g}/\text{m}^3$)
 - 0.1 to 0.1
- Modelled Road Links
- WBC Administrative Area



Client:
West Berkshire Council

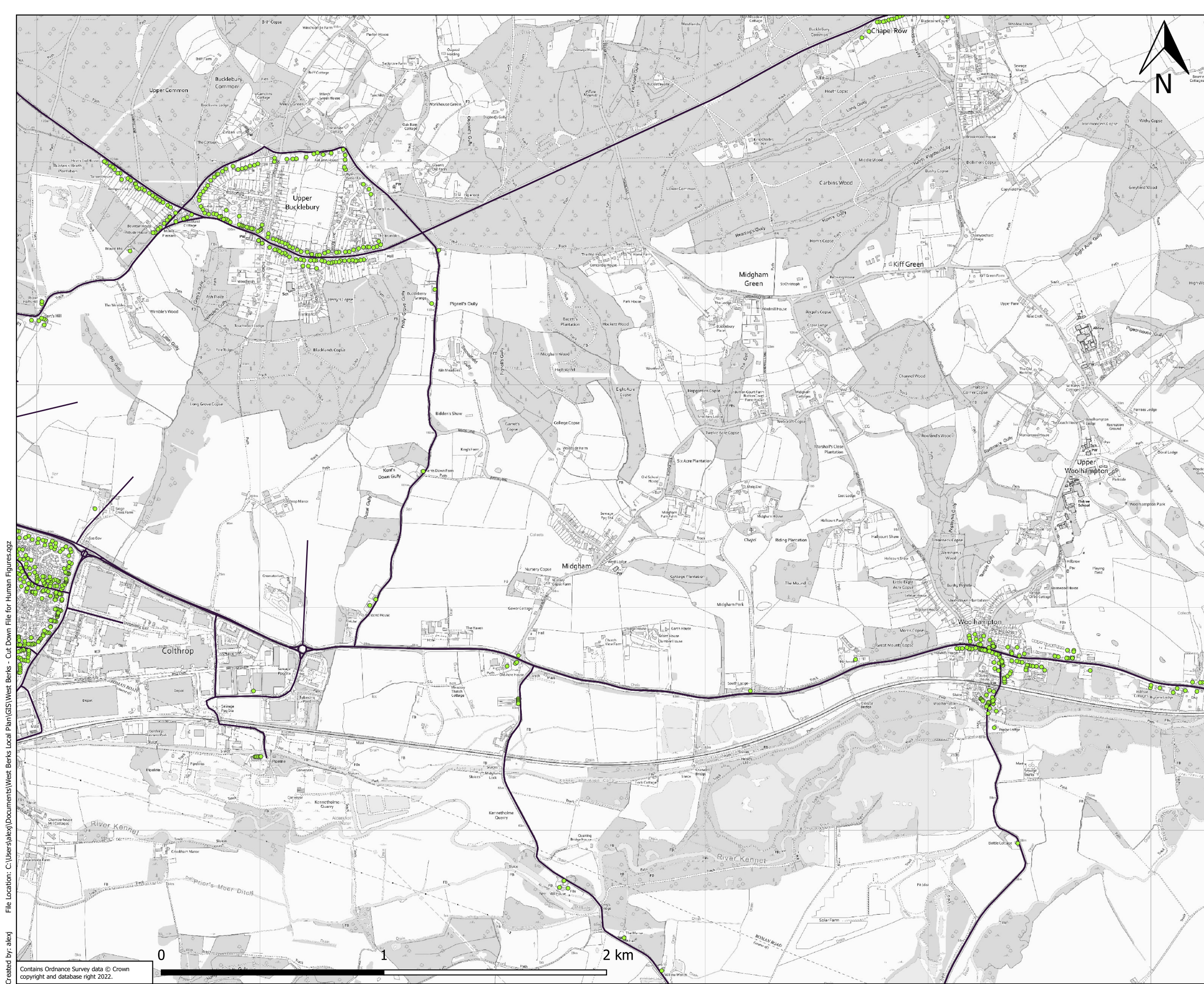
Project:
West Berkshire Council Pre-Submission Local Plan

Title:
Modelled Change in 2037 PM2.5 Concentrations with 2037 Pre-Submission Local Plan - Cold Ash

Figure: 8-275 Drawn: AJ
 Date: 23/12/2022 Checked: JMR
 Scale: 1:11,000 Approved: AT

File Location: C:\Users\alexj\Documents\West Berks Local Plan\GIS\West Berks - Cut Down File for Human Figures.qgz
Created by: alexj

Contains Ordnance Survey data © Crown copyright and database right 2022.



KEY

Modelled Change in 2037 PM2.5 Concentrations with 2037 Pre-Submission Local Plan ($\mu\text{g}/\text{m}^3$)

● -0.1 to 0.1

— Modelled Road Links

▭ WBC Administrative Area



Client:
West Berkshire Council

Project:
West Berkshire Council Pre-Submission Local Plan

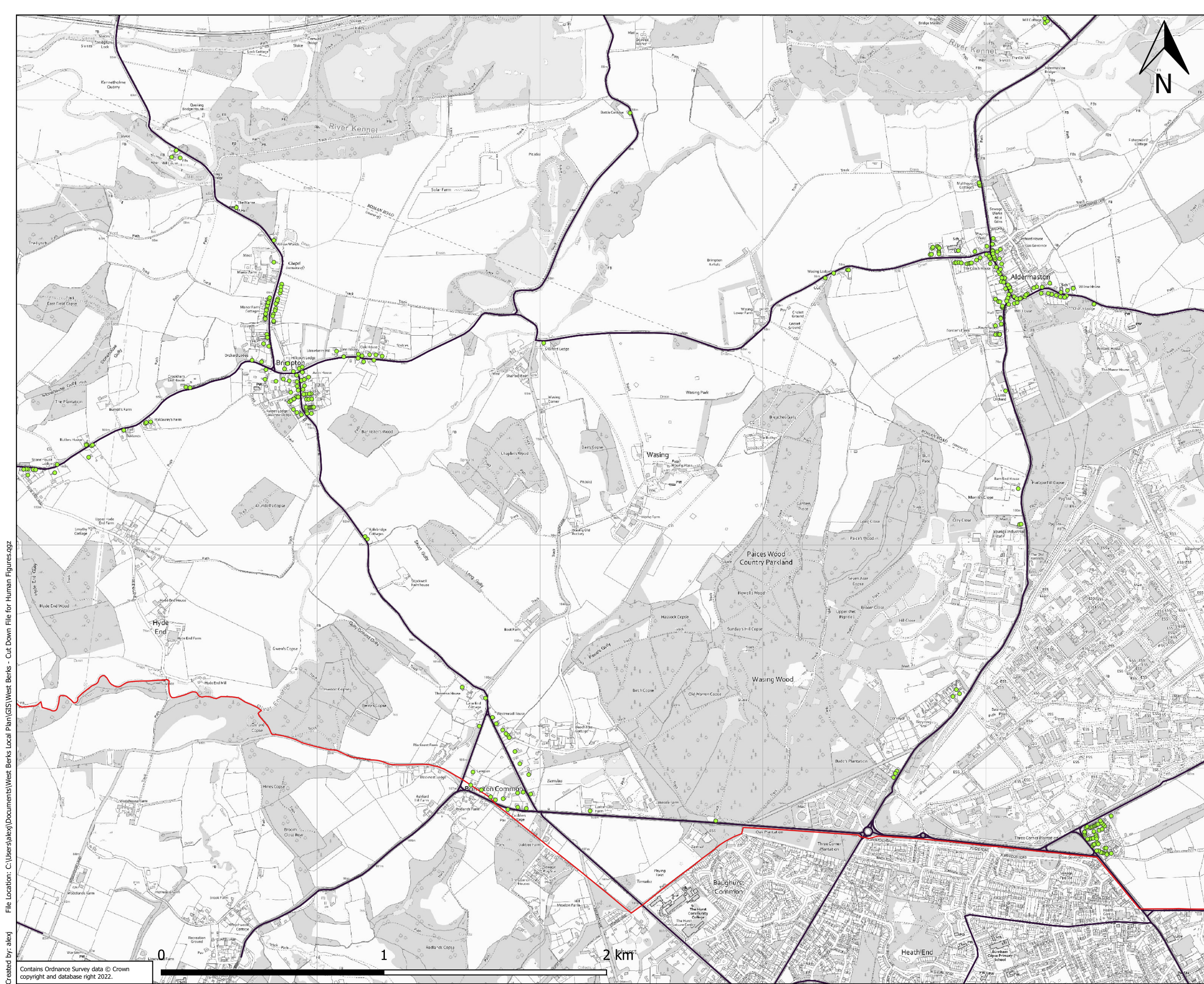
Title:
Modelled Change in 2037 PM2.5 Concentrations with 2037 Pre-Submission Local Plan - Upper Bucklebury and Woolhampton

Figure: 8-276 Drawn: AJ
Date: 23/12/2022 Checked: JMR
Scale: 1:15,000 Approved: AT



File Location: C:\Users\alexj\Documents\West Berks Local Plan\GIS\West Berks - Cut Down File for Human Figures.qgx
Created by: alexj

Contains Ordnance Survey data © Crown copyright and database right 2022.



KEY

Modelled Change in 2037 PM2.5 Concentrations with 2037 Pre-Submission Local Plan (µg/m³)

● -0.1 to 0.1

— Modelled Road Links

▭ WBC Administrative Area



Client:

West Berkshire Council

Project:

West Berkshire Council Pre-Submission Local Plan

Title:

Modelled Change in 2037 PM2.5 Concentrations with 2037 Pre-Submission Local Plan - Brimpton and Aldermaston

Figure: 8-277

Drawn: AJ

Date: 23/12/2022

Checked: JMR

Scale: 1:15,000

Approved: AT



KEY

Modelled Change in 2037 PM2.5 Concentrations with 2037 Pre-Submission Local Plan ($\mu\text{g}/\text{m}^3$)

- -0.1 to 0.1
- Modelled Road Links
- ▭ WBC Administrative Area



Client:
West Berkshire Council

Project:
West Berkshire Council Pre-Submission Local Plan

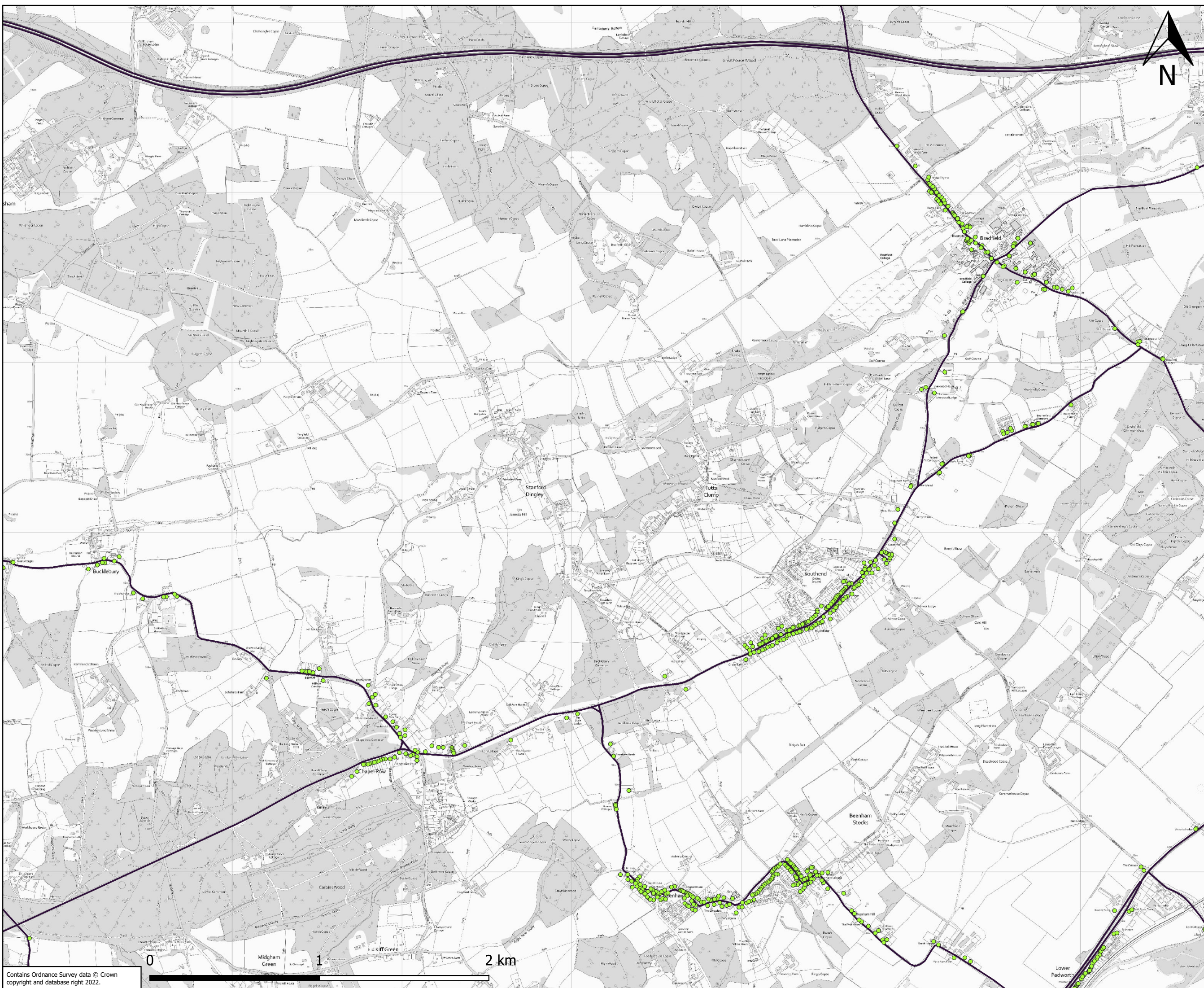
Title:
Modelled Change in 2037 PM2.5 Concentrations with 2037 Pre-Submission Local Plan - Beenham and Aldermaston Wharf

Figure: 8-278 Drawn: AJ
 Date: 23/12/2022 Checked: JMR
 Scale: 1:12,500 Approved: AT

File Location: C:\Users\alexj\Documents\West Berks Local Plan\GIS\West Berks - Cut Down File for Human Figures.qgx
 Created by: alexj

Contains Ordnance Survey data © Crown copyright and database right 2022.

File Location: C:\Users\alexj\Documents\West Berks Local Plan\GIS\West Berks - Cut Down File for Human Figures.qgz
Created by: alexj



KEY

- Modelled Change in 2037 PM2.5 Concentrations with 2037 Pre-Submission Local Plan ($\mu\text{g}/\text{m}^3$)
- -0.1 to 0.1
- Modelled Road Links
- WBC Administrative Area



Client:	West Berkshire Council
Project:	West Berkshire Council Pre-Submission Local Plan
Title:	Modelled Change in 2037 PM2.5 Concentrations with 2037 Pre-Submission Local Plan - Bradfield
Figure: 8-279	Drawn: AJ
Date: 23/12/2022	Checked: JMR
Scale: 1:20,000	Approved: AT



KEY

- Modelled Change in 2037 PM2.5 Concentrations with 2037 Pre-Submission Local Plan ($\mu\text{g}/\text{m}^3$)
- -0.1 to 0.1
- Modelled Road Links
- WBC Administrative Area



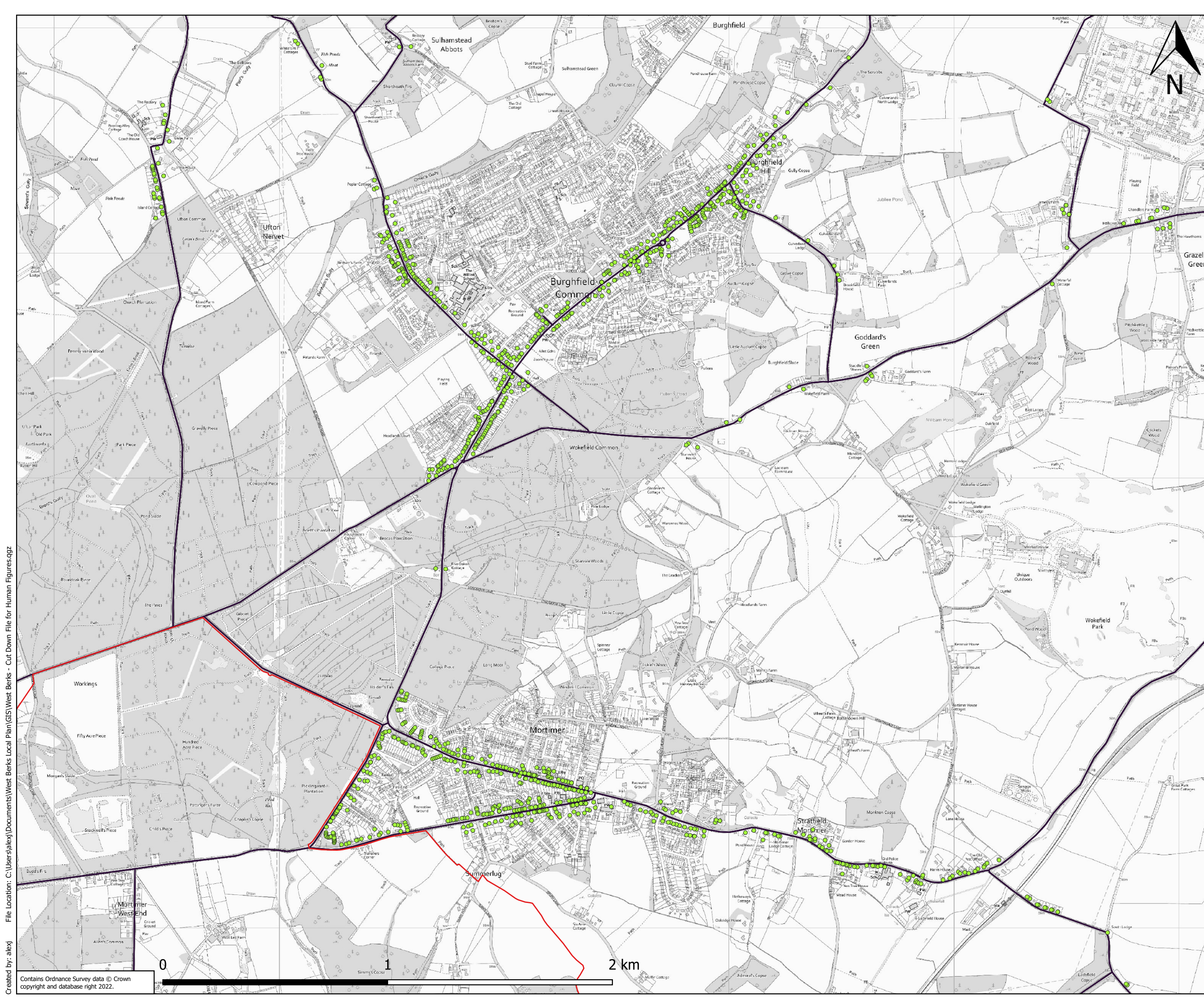
Client:
West Berkshire Council

Project:
West Berkshire Council Pre-Submission Local Plan

Title:
Modelled Change in 2037 PM2.5 Concentrations with 2037 Pre-Submission Local Plan - North East of Tadley

Figure: 8-280 Drawn: AJ
 Date: 23/12/2022 Checked: JMR
 Scale: 1:11,000 Approved: AT

File Location: C:\Users\alexj\Documents\West Berks Local Plan\GIS\West Berks - Cut Down File for Human Figures.qgr
 Created by: alexj



KEY

- Modelled Change in 2037 PM2.5 Concentrations with 2037 Pre-Submission Local Plan ($\mu\text{g}/\text{m}^3$)
 - 0.1 to 0.1
- Modelled Road Links
- WBC Administrative Area



Client:
West Berkshire Council

Project:
West Berkshire Council Pre-Submission Local Plan

Title:
Modelled Change in 2037 PM2.5 Concentrations with 2037 Pre-Submission Local Plan - Burghfield Common and Mortimer

Figure: 8-281 Drawn: AJ
 Date: 23/12/2022 Checked: JMR
 Scale: 1:15,000 Approved: AT

File Location: C:\Users\alexj\Documents\West Berks Local Plan\GIS\West Berks - Cut Down File for Human Figures.qg
 Created by: alexj

Contains Ordnance Survey data © Crown copyright and database right 2022.



KEY

- Modelled Change in 2037 PM2.5 Concentrations with 2037 Pre-Submission Local Plan ($\mu\text{g}/\text{m}^3$)
 - 0.1 to 0.1
- Modelled Road Links
- WBC Administrative Area



Client:
West Berkshire Council

Project:
West Berkshire Council Pre-Submission Local Plan

Title:
Modelled Change in 2037 PM2.5 Concentrations with 2037 Pre-Submission Local Plan - Beech Hill Area

Figure: 8-282 Drawn: AJ
 Date: 23/12/2022 Checked: JMR
 Scale: 1:15,000 Approved: AT

File Location: C:\Users\alexj\Documents\West Berks Local Plan\GIS\West Berks - Cut Down File for Human Figures.qg
 Created by: alexj

Contains Ordnance Survey data © Crown copyright and database right 2022.



KEY

Modelled Change in 2037 PM2.5 Concentrations with 2037 Pre-Submission Local Plan ($\mu\text{g}/\text{m}^3$)

- -0.1 to 0.1
- Modelled Road Links
- WBC Administrative Area



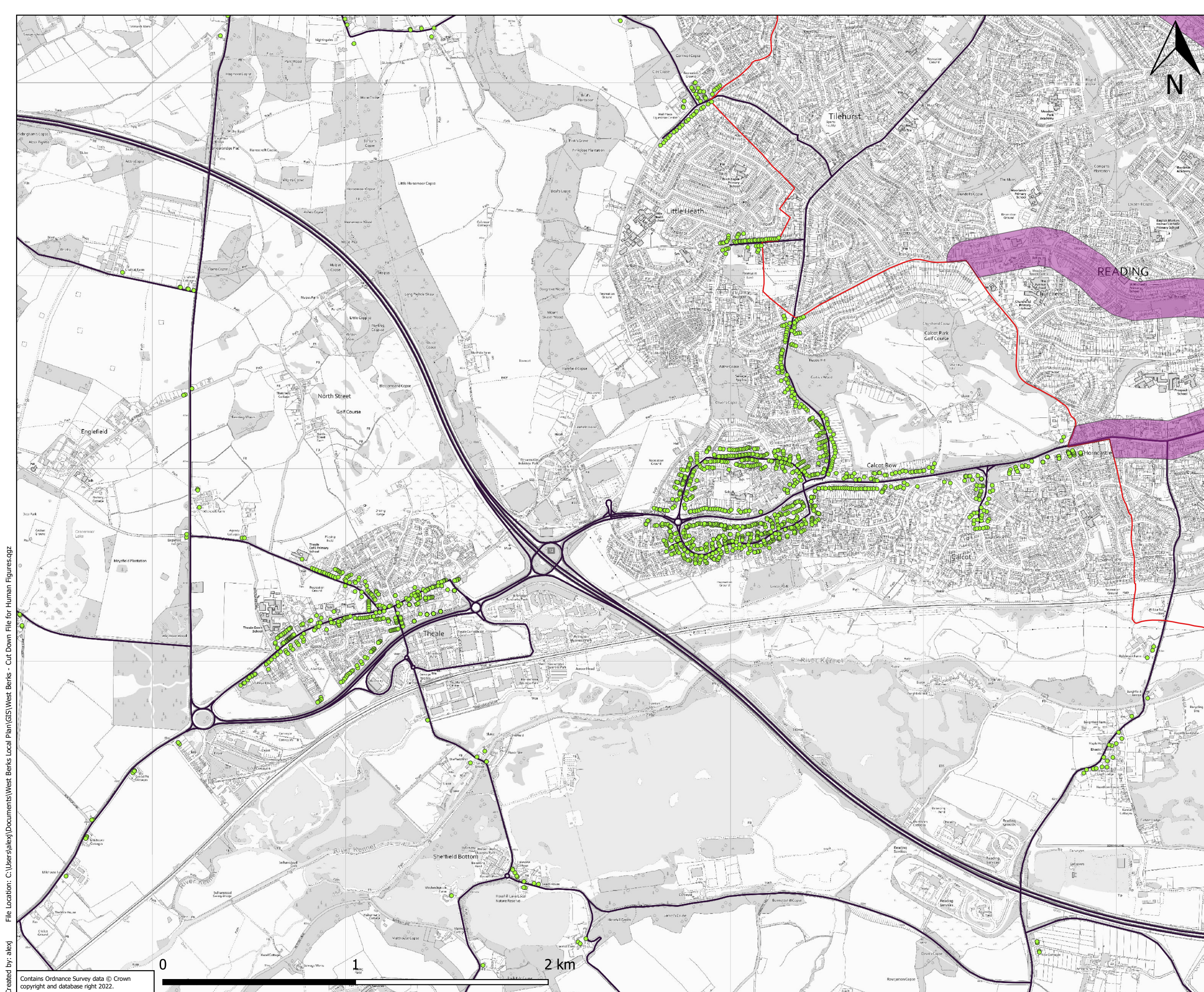
Client:
West Berkshire Council

Project:
West Berkshire Council Pre-Submission Local Plan

Title:
Modelled Change in 2037 PM2.5 Concentrations with 2037 Pre-Submission Local Plan - Burghfield and Sulhamstead

Figure: 8-283 Drawn: AJ
 Date: 23/12/2022 Checked: JMR
 Scale: 1:17,500 Approved: AT

File Location: C:\Users\alexj\Documents\West Berks Local Plan\GIS\West Berks - Cut Down File for Human Figures.qgz
 Created by: alexj



KEY

- -0.1 to 0.1
- Modelled Road Links
- ▭ WBC Administrative Area
- ▭ Air Quality Management Area



Client:
West Berkshire Council

Project:
West Berkshire Council Pre-Submission Local Plan

Title:
Modelled Change in 2037 PM2.5 Concentrations with 2037 Pre-Submission Local Plan - Theale and Calcot

Figure: 8-284 Drawn: AJ
Date: 23/12/2022 Checked: JMR
Scale: 1:17,500 Approved: AT

File Location: C:\Users\alexj\Documents\West Berks Local Plan\GIS\West Berks - Cut Down File for Human Figures.qgz
Created by: alexj

Contains Ordnance Survey data © Crown copyright and database right 2022.



KEY

- Modelled Change in 2037 PM2.5 Concentrations with 2037 Pre-Submission Local Plan ($\mu\text{g}/\text{m}^3$)
 - 0.1 to 0.1
- Modelled Road Links
- WBC Administrative Area



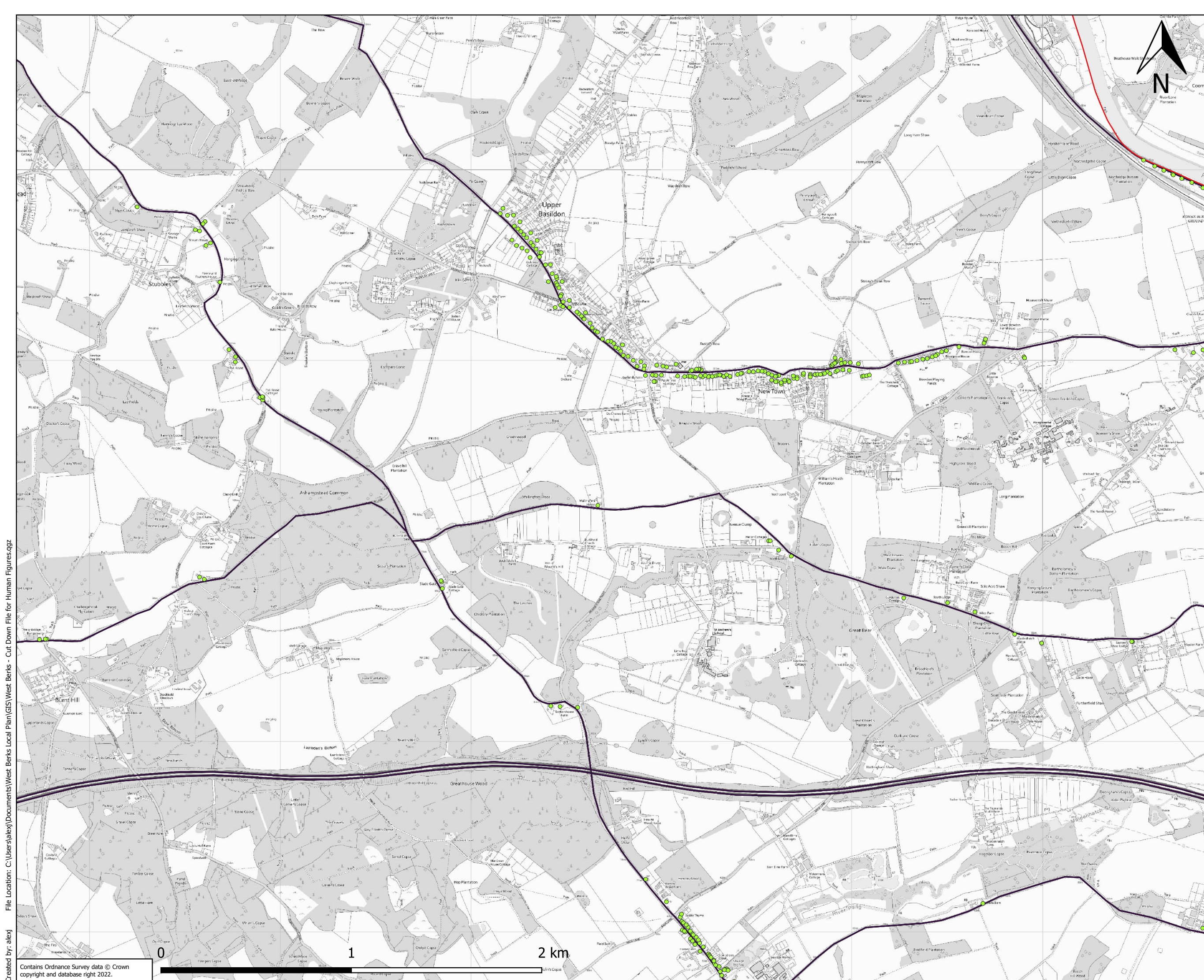
Client:
West Berkshire Council

Project:
West Berkshire Council Pre-Submission Local Plan

Title:
Modelled Change in 2037 PM2.5 Concentrations with 2037 Pre-Submission Local Plan - Pangbourne and Tidmarsh

Figure: 8-285 Drawn: AJ
 Date: 23/12/2022 Checked: JMR
 Scale: 1:11,000 Approved: AT

File Location: C:\Users\alexj\Documents\West Berks Local Plan\GIS\West Berks - Cut Down File for Human Figures.qgz
Created by: alexj



KEY

- Modelled Change in 2037 PM2.5 Concentrations with 2037 Pre-Submission Local Plan ($\mu\text{g}/\text{m}^3$)
- -0.1 to 0.1
- Modelled Road Links
- ▭ WBC Administrative Area



Client:
West Berkshire Council

Project:
West Berkshire Council Pre-Submission Local Plan

Title:
Modelled Change in 2037 PM2.5 Concentrations with 2037 Pre-Submission Local Plan - Upper Basildon

Figure: 8-286
Date: 23/12/2022
Scale: 1:17,500

Drawn: AJ
Checked: JMR
Approved: AT

File Location: C:\Users\alexj\Documents\West Berks Local Plan\GIS\West Berks - Cut Down File for Human Figures.qgx
Created by: alexj



KEY

Modelled Change in 2037 PM2.5 Concentrations with 2037 Pre-Submission Local Plan ($\mu\text{g}/\text{m}^3$)

● -0.1 to 0.1

— Modelled Road Links

□ WBC Administrative Area



Client:
West Berkshire Council

Project:
West Berkshire Council Pre-Submission Local Plan

Title:
Modelled Change in 2037 PM2.5 Concentrations with 2037 Pre-Submission Local Plan - Hampstead Norreys Area

Figure: 8-287
Date: 23/12/2022
Scale: 1:15,000

Drawn: AJ
Checked: JMR
Approved: AT

File Location: C:\Users\alexj\Documents\West Berks Local Plan\GIS\West Berks - Cut Down File for Human Figures.qgx
Created by: alexj

Contains Ordnance Survey data © Crown copyright and database right 2022.



KEY

- Modelled Change in 2037 PM2.5 Concentrations with 2037 Pre-Submission Local Plan ($\mu\text{g}/\text{m}^3$)
 - -0.1 to 0.1
- Modelled Road Links
- WBC Administrative Area



Client:
West Berkshire Council

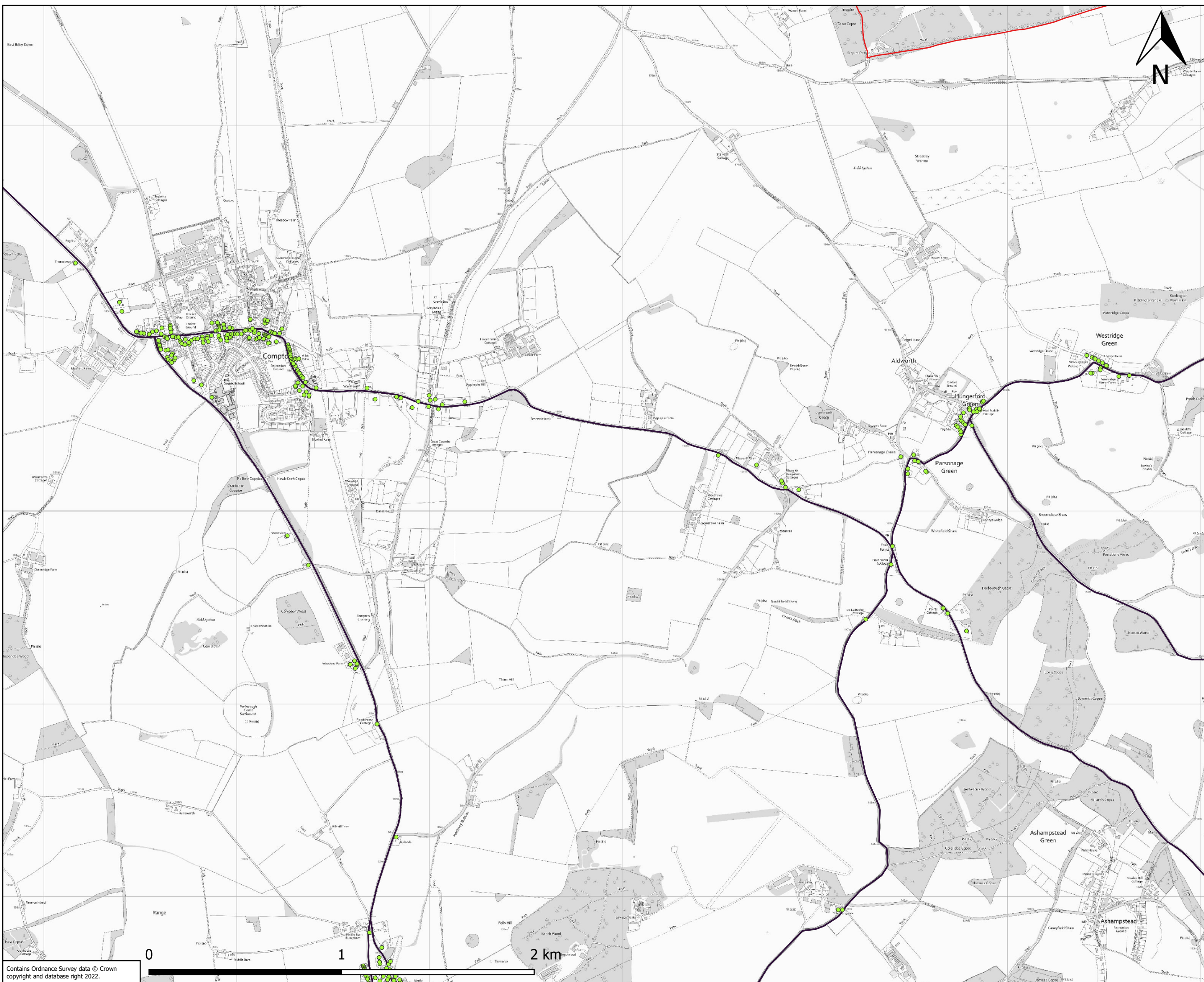
Project:
West Berkshire Council Pre-Submission Local Plan

Title:
Modelled Change in 2037 PM2.5 Concentrations with 2037 Pre-Submission Local Plan - Streatley

Figure: 8-288 Drawn: AJ
 Date: 23/12/2022 Checked: JMR
 Scale: 1:15,000 Approved: AT

File Location: C:\Users\alexj\Documents\West Berks Local Plan\GIS\West Berks - Cut Down File for Human Figures.qg
 Created by: alexj

File Location: C:\Users\alexj\Documents\West Berks Local Plan\GIS\West Berks - Cut Down File for Human Figures.qgxd
Created by: alexj



KEY

- Modelled Change in 2037 PM2.5 Concentrations with 2037 Pre-Submission Local Plan ($\mu\text{g}/\text{m}^3$)
 - 0.1 to 0.1
- Modelled Road Links
- WBC Administrative Area



Client:
West Berkshire Council

Project:
West Berkshire Council Pre-Submission Local Plan

Title:
Modelled Change in 2037 PM2.5 Concentrations with 2037 Pre-Submission Local Plan - Compton

Figure: 8-289	Drawn: AJ
Date: 23/12/2022	Checked: JMR
Scale: 1:17,500	Approved: AT



KEY

- Modelled Change in 2037 PM2.5 Concentrations with 2037 Pre-Submission Local Plan ($\mu\text{g}/\text{m}^3$)
- -0.1 to 0.1
- Modelled Road Links
- WBC Administrative Area



Client:
West Berkshire Council

Project:
West Berkshire Council Pre-Submission Local Plan

Title:
Modelled Change in 2037 PM2.5 Concentrations with 2037 Pre-Submission Local Plan - Chieveley

Figure: 8-290
Date: 23/12/2022
Scale: 1:15,000

Drawn: AJ
Checked: JMR
Approved: AT

File Location: C:\Users\alexj\Documents\West Berks Local Plan\GIS\West Berks - Cut Down File for Human Figures.qgr
Created by: alexj

Contains Ordnance Survey data © Crown copyright and database right 2022.

File Location: C:\Users\alexj\Documents\West Berks Local Plan\GIS\West Berks - Cut Down File for Human Figures.qgx
Created by: alexj



KEY

- Modelled Change in 2037 PM2.5 Concentrations with 2037 Pre-Submission Local Plan ($\mu\text{g}/\text{m}^3$)
 - 0.1 to 0.1
- Modelled Road Links
- WBC Administrative Area



Client:
West Berkshire Council

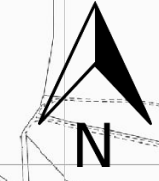
Project:
West Berkshire Council Pre-Submission Local Plan

Title:
Modelled Change in 2037 PM2.5 Concentrations with 2037 Pre-Submission Local Plan - Peasemore Area

Figure: 8-291
Date: 23/12/2022
Scale: 1:15,000

Drawn: AJ
Checked: JMR
Approved: AT

Contains Ordnance Survey data © Crown copyright and database right 2022.



KEY

- Modelled Change in 2037 PM2.5 Concentrations with 2037 Pre-Submission Local Plan ($\mu\text{g}/\text{m}^3$)
 - -0.1 to 0.1
- Modelled Road Links
- WBC Administrative Area

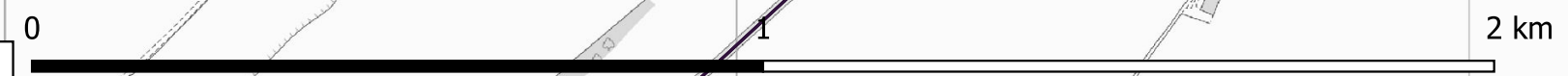


Client:
West Berkshire Council

Project:
West Berkshire Council Pre-Submission Local Plan

Title:
Modelled Change in 2037 PM2.5 Concentrations with 2037 Pre-Submission Local Plan - East Ilsley Area

Figure: 8-292	Drawn: AJ
Date: 23/12/2022	Checked: JMR
Scale: 1:10,000	Approved: AT



File Location: C:\Users\alexj\Documents\West Berks Local Plan\GIS\West Berks - Cut Down File for Human Figures.qg
Created by: alexj

Contains Ordnance Survey data © Crown copyright and database right 2022.