

KEY

Modelled Change in 2037 NO2 Concentrations with 2037 Pre-Submission Local Plan ($\mu\text{g}/\text{m}^3$)

- -0.1 to 0.1
- 0.2 to 0.4

Modelled Road Links

WBC Administrative Area



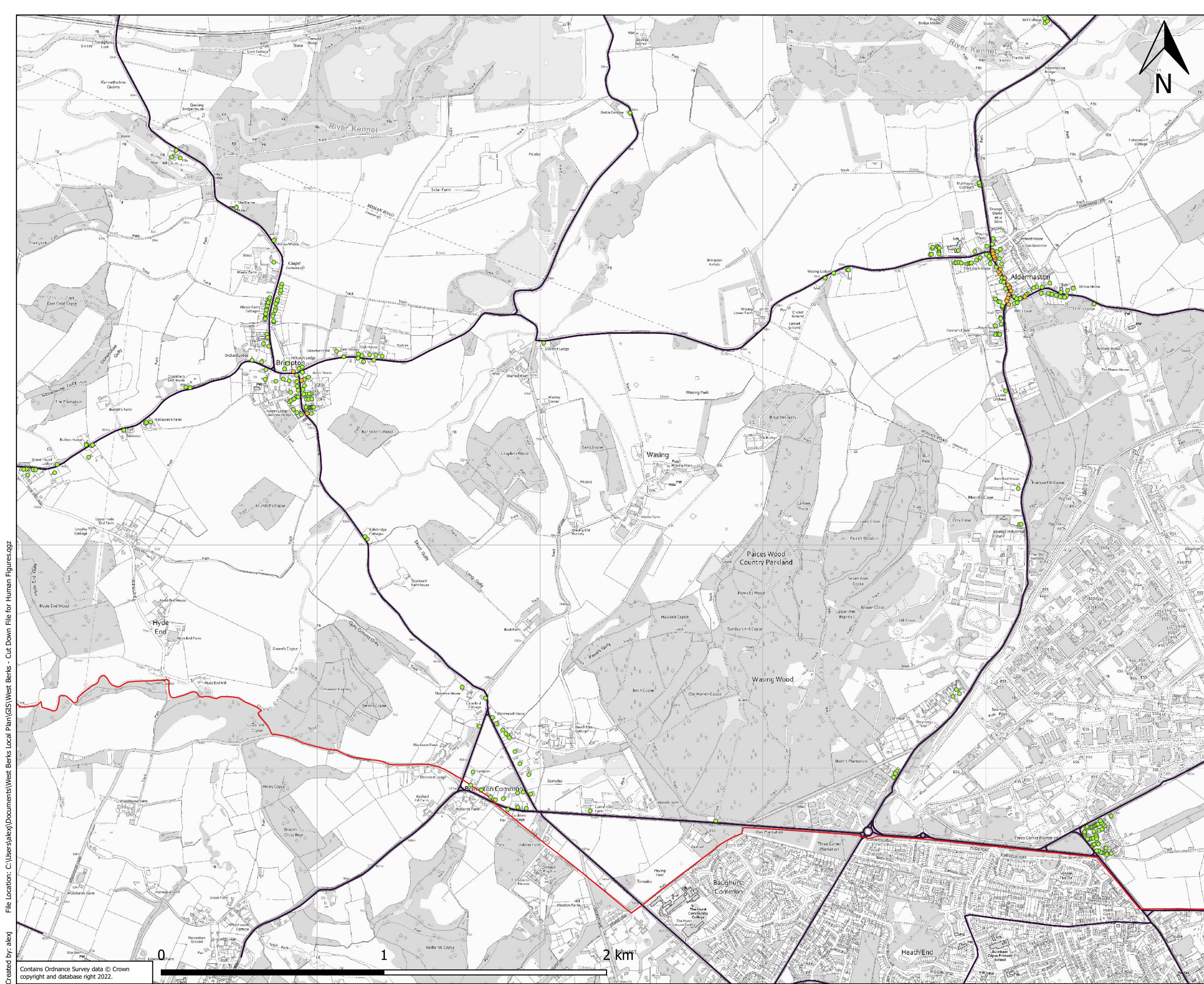
Client:
West Berkshire Council

Project:
West Berkshire Council Pre-Submission Local Plan

Title:
Modelled Change in 2037 NO2 Concentrations with 2037 Pre-Submission Local Plan - Upper Bucklebury and Woolhampton

Figure: 8-144 Drawn: AJ
 Date: 23/12/2022 Checked: JMR
 Scale: 1:15,000 Approved: AT

File Location: C:\Users\alexj\Documents\West Berks Local Plan\GIS\West Berks - Cut Down File for Human Figures.qgr
Created by: alexj



KEY

Modelled Change in 2037 NO₂ Concentrations with 2037 Pre-Submission Local Plan (µg/m³)

- -0.1 to 0.1
- 0.2 to 0.4

Modelled Road Links

WBC Administrative Area



Client:

West Berkshire Council

Project:

West Berkshire Council Pre-Submission Local Plan

Title:

Modelled Change in 2037 NO₂ Concentrations with 2037 Pre-Submission Local Plan - Brimpton and Aldermaston

Figure: 8-145

Drawn: AJ

Date: 23/12/2022

Checked: JMR

Scale: 1:15,000

Approved: AT



KEY

Modelled Change in 2037 NO₂ Concentrations with 2037 Pre-Submission Local Plan (µg/m³)

- -0.1 to 0.1
- Modelled Road Links
- ▭ WBC Administrative Area



Client:
West Berkshire Council

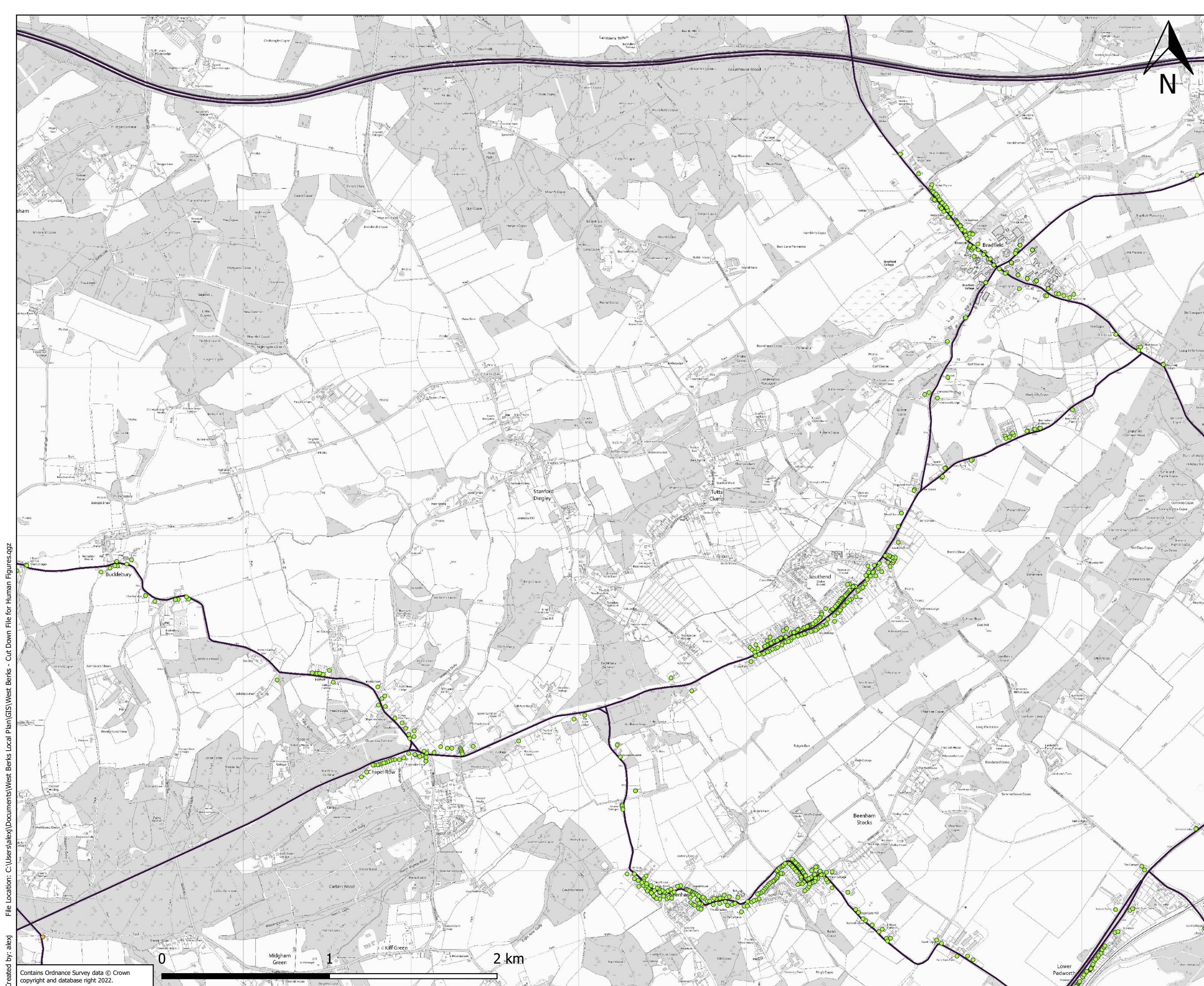
Project:
West Berkshire Council Pre-Submission Local Plan

Title:
Modelled Change in 2037 NO₂ Concentrations with 2037 Pre-Submission Local Plan - Beenham and Aldermaston Wharf

Figure: 8-146 Drawn: AJ
Date: 23/12/2022 Checked: JMR
Scale: 1:12,500 Approved: AT

File Location: C:\Users\alexj\Documents\West Berks Local Plan\GIS\West Berks - Cut Down File for Human Figures.qgx
Created by: alexj

Contains Ordnance Survey data © Crown copyright and database right 2022.



KEY

- Modelled Change in 2037 NO2 Concentrations with 2037 Pre-Submission Local Plan ($\mu\text{g}/\text{m}^3$)
- -0.1 to 0.1
- Modelled Road Links
- WBC Administrative Area



| | | |
|------------------|--|--|
| Client: | West Berkshire Council | |
| Project: | West Berkshire Council Pre-Submission Local Plan | |
| Title: | Modelled Change in 2037 NO2 Concentrations with 2037 Pre-Submission Local Plan - Bradfield | |
| Figure: 8-147 | Drawn: AJ | |
| Date: 23/12/2022 | Checked: JMR | |
| Scale: 1:20,000 | Approved: AT | |

File Location: C:\Users\alexj\Documents\West Berks Local Plan\GIS\West Berks - Cut Down File for Human Figures.qgz
Created by: alexj

Contains Ordnance Survey data © Crown copyright and database right 2022.



KEY

- Modelled Change in 2037 NO2 Concentrations with 2037 Pre-Submission Local Plan ($\mu\text{g}/\text{m}^3$)
- -0.1 to 0.1
- Modelled Road Links
- WBC Administrative Area



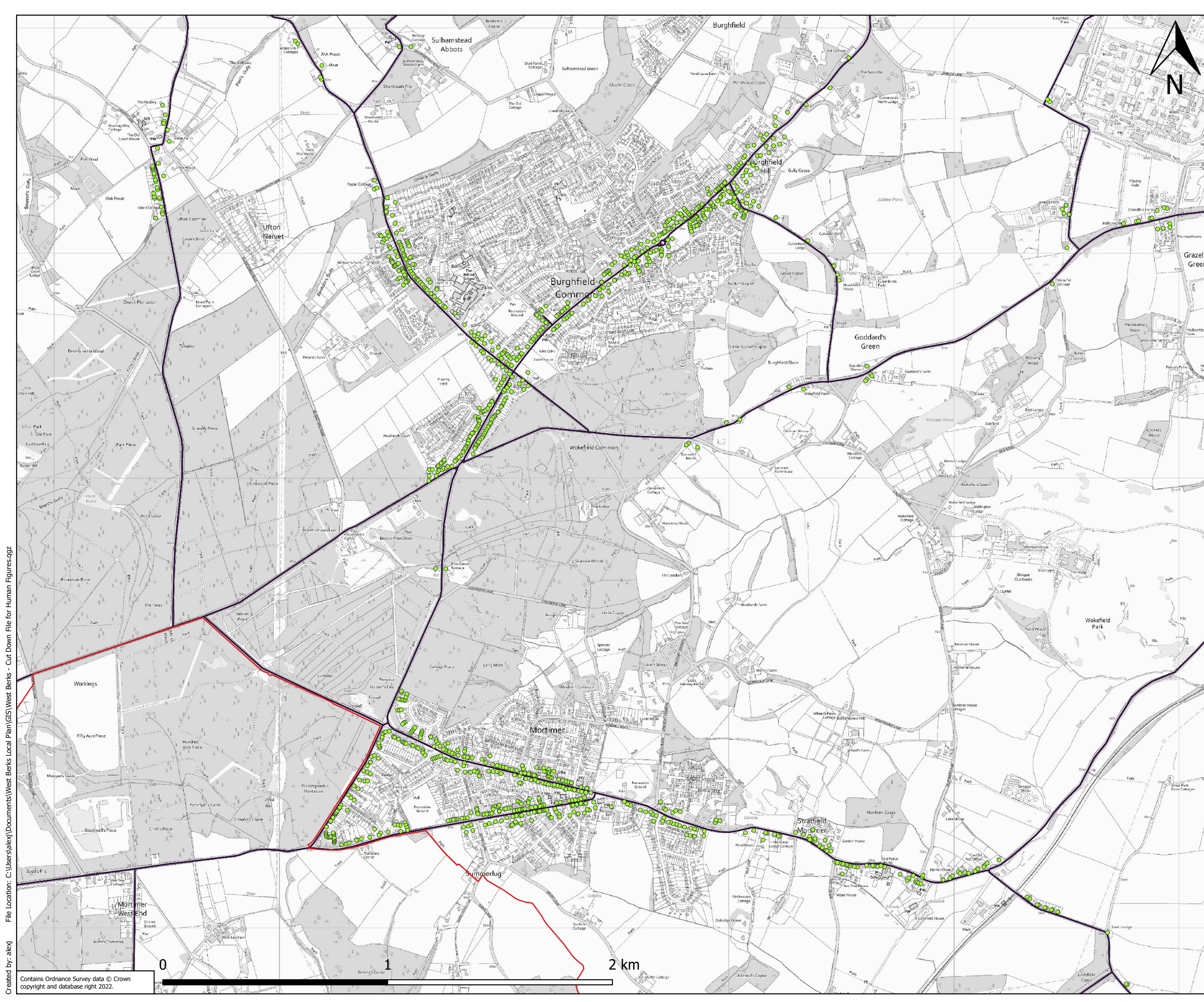
Client:
West Berkshire Council

Project:
West Berkshire Council Pre-Submission Local Plan

Title:
Modelled Change in 2037 NO2 Concentrations with 2037 Pre-Submission Local Plan - North East of Tadley


Figure: 8-148 Drawn: AJ
 Date: 23/12/2022 Checked: JMR
 Scale: 1:11,000 Approved: AT

File Location: C:\Users\alexj\Documents\West Berks Local Plan\GIS\West Berks - Cut Down File for Human Figures.qgr
 Created by: alexj
 Contains Ordnance Survey data © Crown copyright and database right 2022.



KEY

- Modelled Change in 2037 NO₂ Concentrations with 2037 Pre-Submission Local Plan (µg/m³)
 - 0.1 to 0.1
- Modelled Road Links
- WBC Administrative Area



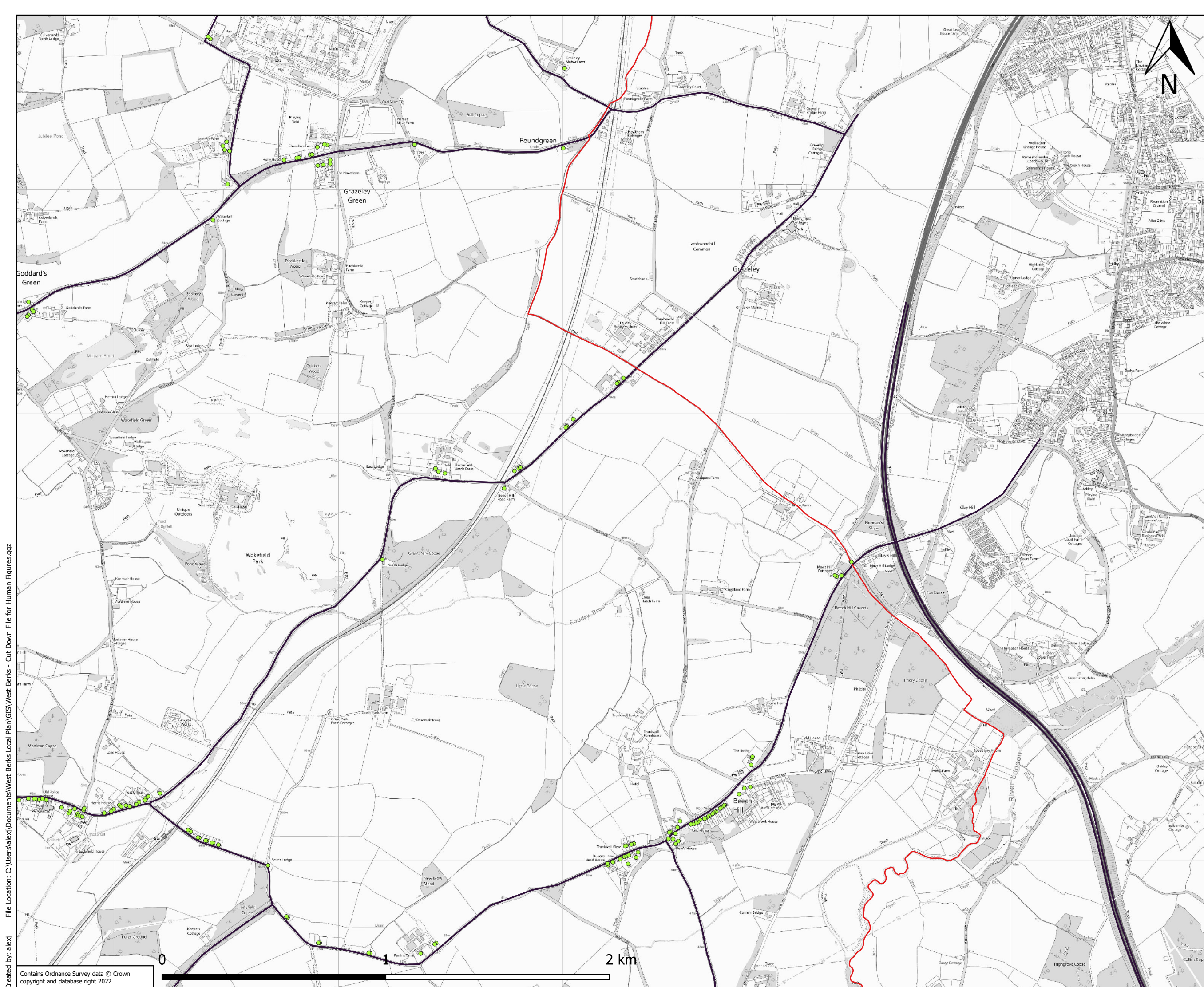
Client:
West Berkshire Council

Project:
West Berkshire Council Pre-Submission Local Plan

Title:
Modelled Change in 2037 NO₂ Concentrations with 2037 Pre-Submission Local Plan - Burghfield Common and Mortimer

Figure: 8-149 Drawn: AJ
Date: 23/12/2022 Checked: JMR
Scale: 1:15,000 Approved: AT

File Location: C:\Users\alexj\Documents\West Berks Local Plan\GIS\West Berks - Cut Down File for Human Figures.qgx
Created by: alexj



KEY

Modelled Change in 2037 NO₂ Concentrations with 2037 Pre-Submission Local Plan (µg/m³)

- -0.1 to 0.1
- Modelled Road Links
- WBC Administrative Area



Client:
West Berkshire Council

Project:
West Berkshire Council Pre-Submission Local Plan

Title:
Modelled Change in 2037 NO₂ Concentrations with 2037 Pre-Submission Local Plan - Beech Hill Area

Figure: 8-150 Drawn: AJ
 Date: 23/12/2022 Checked: JMR
 Scale: 1:15,000 Approved: AT

File Location: C:\Users\alexj\Documents\West Berks Local Plan\GIS\West Berks - Cut Down File for Human Figures.qgx
 Created by: alexj

Contains Ordnance Survey data © Crown copyright and database right 2022.



KEY

- Modelled Change in 2037 NO2 Concentrations with 2037 Pre-Submission Local Plan ($\mu\text{g}/\text{m}^3$)
 - 0.1 to 0.1
- Modelled Road Links
- WBC Administrative Area



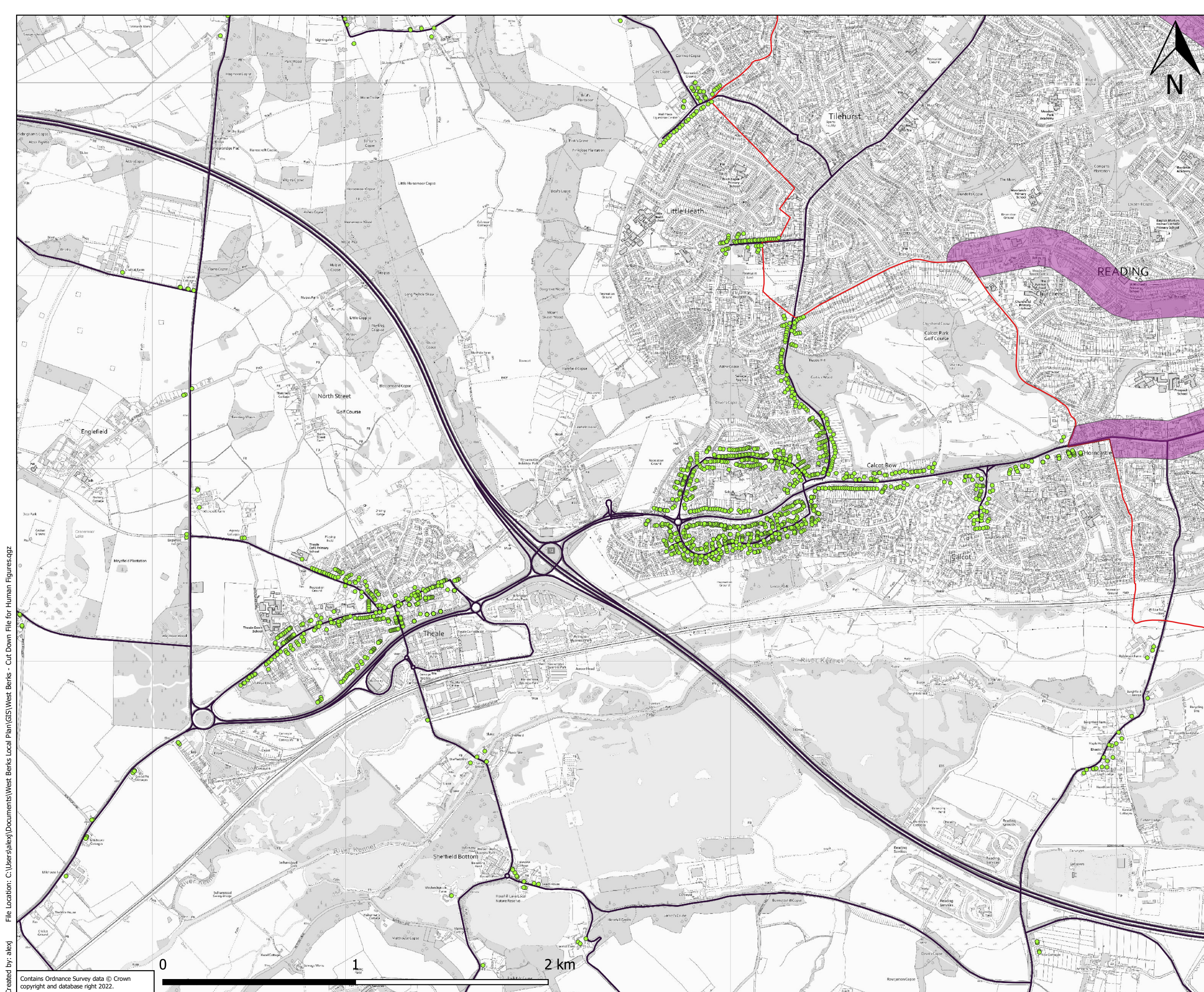
Client:
West Berkshire Council

Project:
West Berkshire Council Pre-Submission Local Plan

Title:
Modelled Change in 2037 NO2 Concentrations with 2037 Pre-Submission Local Plan - Burghfield and Sulhamstead

Figure: 8-151 Drawn: AJ
 Date: 23/12/2022 Checked: JMR
 Scale: 1:17,500 Approved: AT

File Location: C:\Users\alexj\Documents\West Berks Local Plan\GIS\West Berks - Cut Down File for Human Figures.qgz
 Created by: alexj



KEY

- -0.1 to 0.1
- Modelled Road Links
- ▭ WBC Administrative Area
- ▭ Air Quality Management Area



Client:
West Berkshire Council

Project:
West Berkshire Council Pre-Submission Local Plan

Title:
Modelled Change in 2037 NO2 Concentrations with 2037 Pre-Submission Local Plan - Theale and Calcot

Figure: 8-152 Drawn: AJ
Date: 23/12/2022 Checked: JMR
Scale: 1:17,500 Approved: AT

File Location: C:\Users\alexj\Documents\West Berks Local Plan\GIS\West Berks - Cut Down File for Human Figures.qgz
Created by: alexj

Contains Ordnance Survey data © Crown copyright and database right 2022.



KEY

- -0.1 to 0.1
- 0.2 to 0.4
- Modelled Road Links
- WBC Administrative Area



Client:
West Berkshire Council

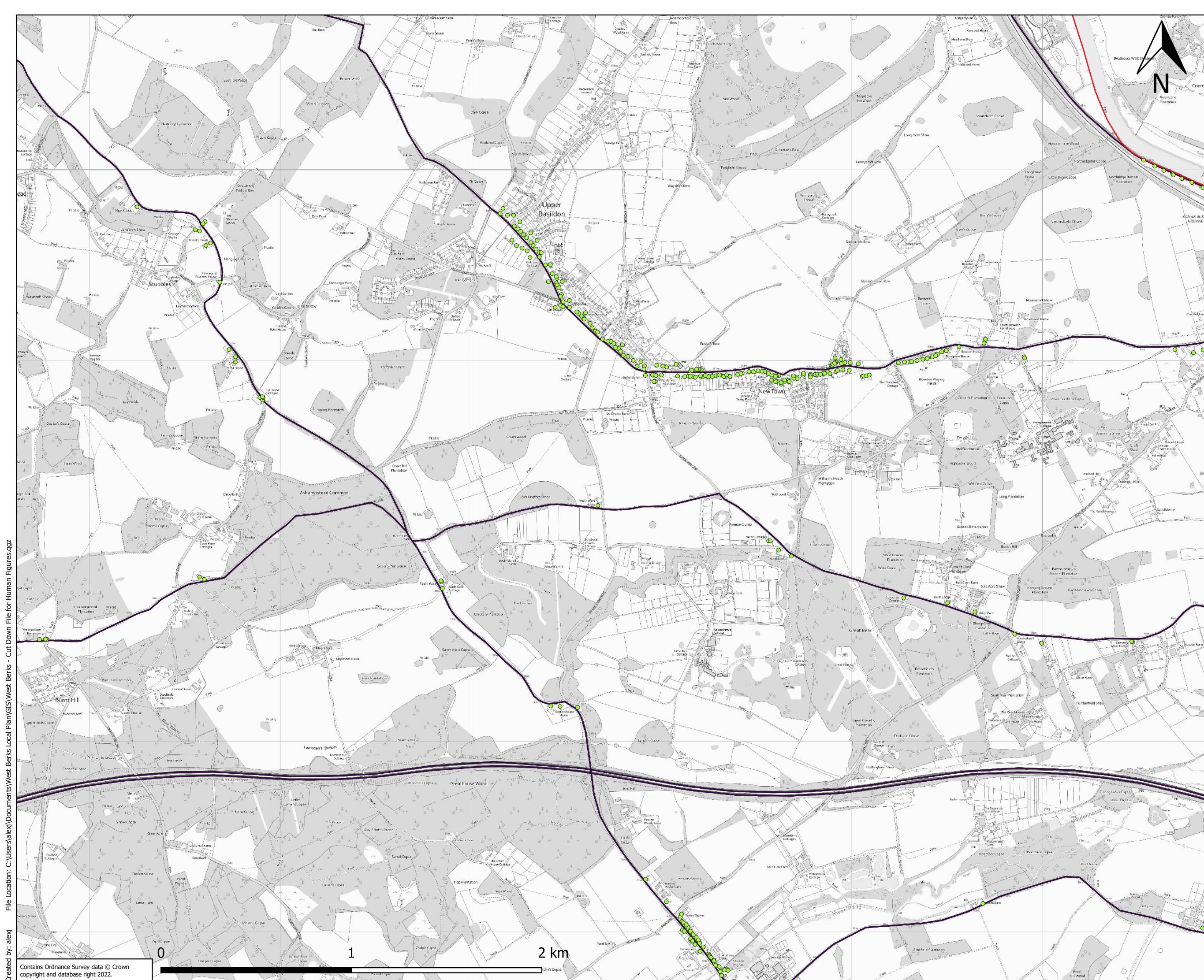
Project:
West Berkshire Council Pre-Submission Local Plan

Title:
Modelled Change in 2037 NO2 Concentrations with 2037 Pre-Submission Local Plan - Pangbourne and Tidmarsh

Figure: 8-153 Drawn: AJ
 Date: 23/12/2022 Checked: JMR
 Scale: 1:11,000 Approved: AT

File Location: C:\Users\alexj\Documents\West Berks Local Plan\GIS\West Berks - Cut Down File for Human Figures.qgz
Created by: alexj

Contains Ordnance Survey data © Crown copyright and database right 2022.



KEY

Modelled Change in 2037 NO2 Concentrations with 2037 Pre-Submission Local Plan ($\mu\text{g}/\text{m}^3$)

- -0.1 to 0.1
- Modelled Road Links
- WBC Administrative Area



Client:
West Berkshire Council

Project:
West Berkshire Council Pre-Submission Local Plan

Title:
Modelled Change in 2037 NO2 Concentrations with 2037 Pre-Submission Local Plan - Upper Basildon

Figure: 8-154 Drawn: AJ
Date: 23/12/2022 Checked: JMR
Scale: 1:17,500 Approved: AT

File Location: C:\Users\alexj\Documents\West Berks Local Plan\GIS\West Berks - Cut Down File for Human Figures.qgz
Created by: alexj



KEY

Modelled Change in 2037 NO2 Concentrations with 2037 Pre-Submission Local Plan ($\mu\text{g}/\text{m}^3$)

● -0.1 to 0.1

— Modelled Road Links

□ WBC Administrative Area



Client:

West Berkshire Council

Project:

West Berkshire Council Pre-Submission Local Plan

Title:

Modelled Change in 2037 NO2 Concentrations with 2037 Pre-Submission Local Plan - Hampstead Norreys Area

Figure: 8-155

Drawn: AJ

Date: 23/12/2022

Checked: JMR

Scale: 1:15,000

Approved: AT

File Location: C:\Users\alexj\Documents\West Berks Local Plan\GIS\West Berks - Cut Down File for Human Figures.qgx
Created by: alexj

Contains Ordnance Survey data © Crown copyright and database right 2022.



KEY

- -0.1 to 0.1
- Modelled Road Links
- ▭ WBC Administrative Area



Client:
West Berkshire Council

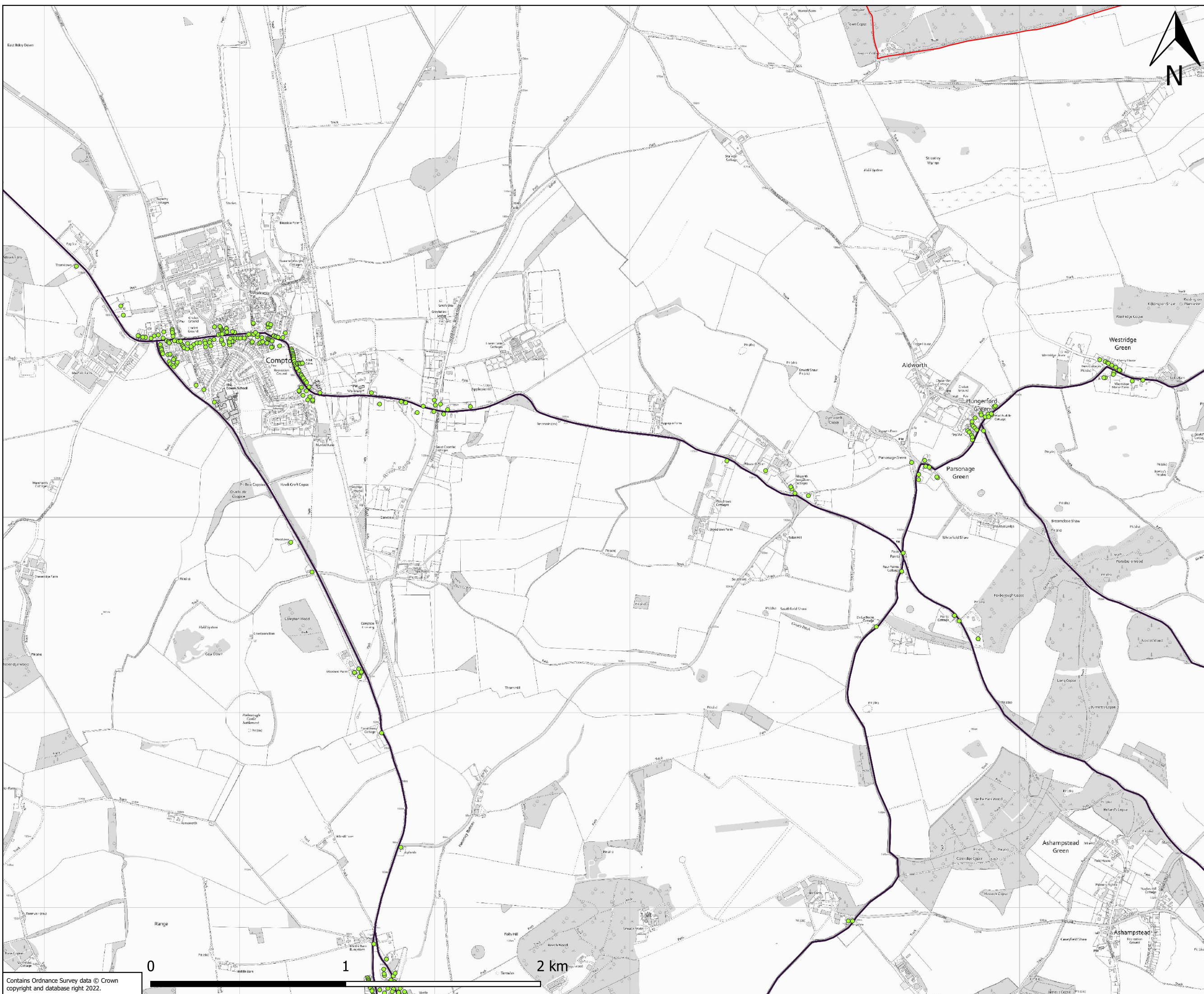
Project:
West Berkshire Council Pre-Submission Local Plan

Title:
Modelled Change in 2037 NO2 Concentrations with 2037 Pre-Submission Local Plan - Streatley

Figure: 8-156 Drawn: AJ
 Date: 23/12/2022 Checked: JMR
 Scale: 1:15,000 Approved: AT

File Location: C:\Users\alexj\Documents\West Berks Local Plan\GIS\West Berks - Cut Down File for Human Figures.qgx
 Created by: alexj

File Location: C:\Users\alexj\Documents\West Berks Local Plan\GIS\West Berks - Cut Down File for Human Figures.qgx
Created by: alexj



KEY

- Modelled Change in 2037 NO2 Concentrations with 2037 Pre-Submission Local Plan ($\mu\text{g}/\text{m}^3$)
- -0.1 to 0.1
- Modelled Road Links
- WBC Administrative Area



| | | |
|----------|--|--------------|
| Client: | West Berkshire Council | |
| Project: | West Berkshire Council Pre-Submission Local Plan | |
| Title: | Modelled Change in 2037 NO2 Concentrations with 2037 Pre-Submission Local Plan - Compton | |
| Figure: | 8-157 | Drawn: AJ |
| Date: | 23/12/2022 | Checked: JMR |
| Scale: | 1:17,500 | Approved: AT |



KEY

- Modelled Change in 2037 NO2 Concentrations with 2037 Pre-Submission Local Plan ($\mu\text{g}/\text{m}^3$)
 - 0.1 to 0.1
- Modelled Road Links
- WBC Administrative Area



Client:
West Berkshire Council

Project:
West Berkshire Council Pre-Submission Local Plan

Title:
Modelled Change in 2037 NO2 Concentrations with 2037 Pre-Submission Local Plan - Chieveley

Figure: 8-158 Drawn: AJ
 Date: 23/12/2022 Checked: JMR
 Scale: 1:15,000 Approved: AT

File Location: C:\Users\alexj\Documents\West Berks Local Plan\GIS\West Berks - Cut Down File for Human Figures.qgx
 Created by: alexj

File Location: C:\Users\alexj\Documents\West Berks Local Plan\GIS\West Berks - Cut Down File for Human Figures.qgz
Created by: alexj



KEY

- Modelled Change in 2037 NO₂ Concentrations with 2037 Pre-Submission Local Plan (µg/m³)
- 0.1 to 0.1
- Modelled Road Links
- WBC Administrative Area



Client:
West Berkshire Council

Project:
West Berkshire Council Pre-Submission Local Plan

Title:
Modelled Change in 2037 NO₂ Concentrations with 2037 Pre-Submission Local Plan - Peasemore Area

Figure: 8-159
Date: 23/12/2022
Scale: 1:15,000

Drawn: AJ
Checked: JMR
Approved: AT

Contains Ordnance Survey data © Crown copyright and database right 2022.



KEY

- -0.4 to -0.2
- -0.1 to 0.1
- 0.2 to 0.4
- ▬ Modelled Road Links
- ▭ WBC Administrative Area

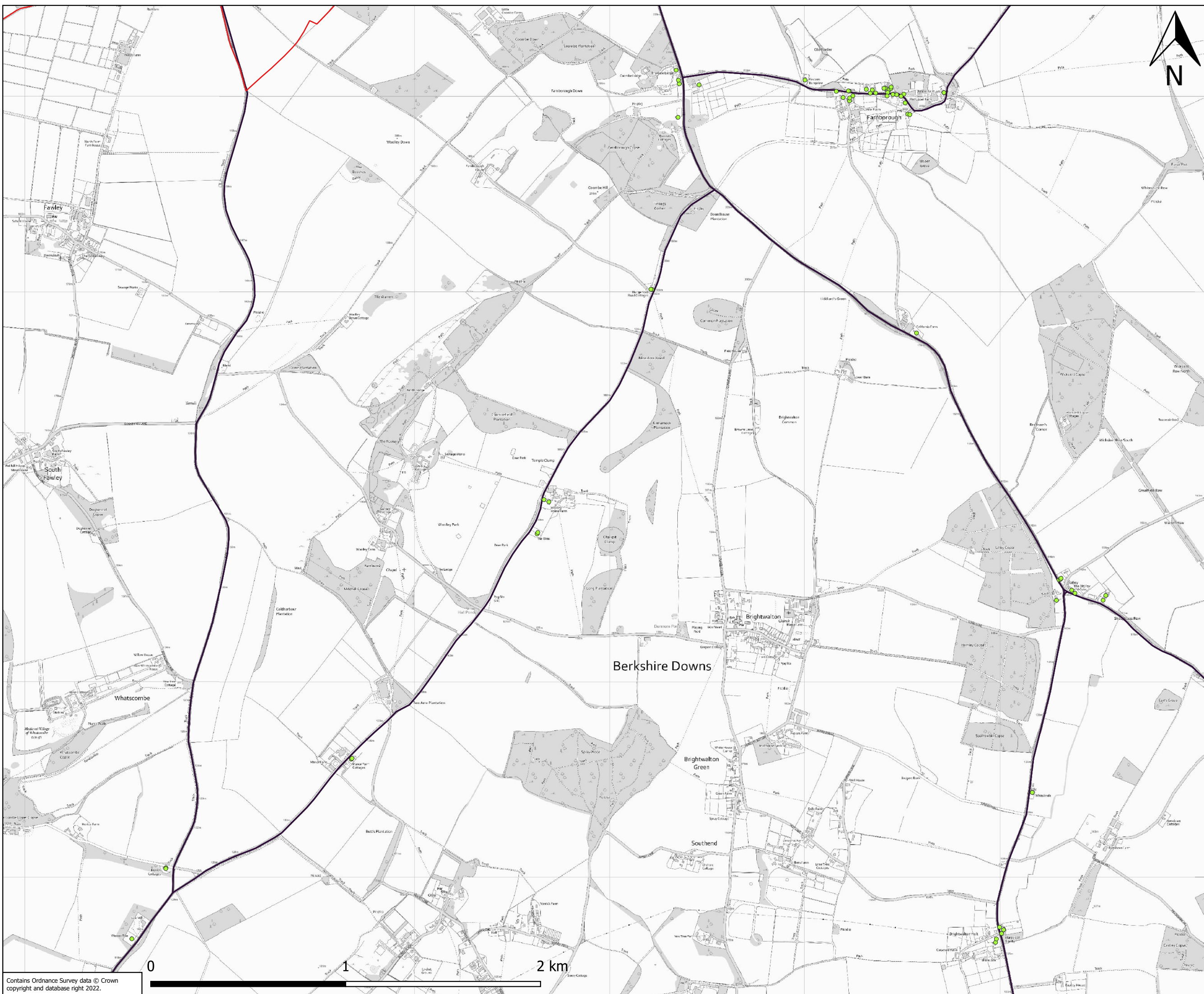


| | | |
|------------------|---|--|
| Client: | West Berkshire Council | |
| Project: | West Berkshire Council Pre-Submission Local Plan | |
| Title: | Modelled Change in 2037 NO2 Concentrations with 2037 Pre-Submission Local Plan - East Ilsley Area | |
| Figure: 8-160 | Drawn: AJ | |
| Date: 23/12/2022 | Checked: JMR | |
| Scale: 1:10,000 | Approved: AT | |

File Location: C:\Users\alexj\Documents\West Berks Local Plan\GIS\West Berks - Cut Down File for Human Figures.qg
 Created by: alexj

Contains Ordnance Survey data © Crown copyright and database right 2022.

File Location: C:\Users\alexj\Documents\West Berks Local Plan\GIS\West Berks - Cut Down File for Human Figures.qgz
Created by: alexj



KEY

- Modelled Change in 2037 NO₂ Concentrations with 2037 Pre-Submission Local Plan (µg/m³)
- -0.1 to 0.1
- Modelled Road Links
- ▭ WBC Administrative Area



Client:
West Berkshire Council

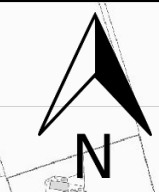
Project:
West Berkshire Council Pre-Submission Local Plan

Title:
Modelled Change in 2037 NO₂ Concentrations with 2037 Pre-Submission Local Plan - Farnborough Area

Figure: 8-161
Date: 23/12/2022
Scale: 1:17,500

Drawn: AJ
Checked: JMR
Approved: AT

File Location: C:\Users\alexj\Documents\West Berks Local Plan\GIS\West Berks - Cut Down File for Human Figures.qgz
Created by: alexj



KEY

- -0.1 to 0.1
- 0.2 to 0.4
- Modelled Road Links
- WBC Administrative Area



Client:
West Berkshire Council

Project:
West Berkshire Council Pre-Submission Local Plan

Title:
Modelled Change in 2037 NO2 Concentrations with 2037 Pre-Submission Local Plan - Lambourn Area

| | |
|------------------|--------------|
| Figure: 8-162 | Drawn: AJ |
| Date: 23/12/2022 | Checked: JMR |
| Scale: 1:17,500 | Approved: AT |

Contains Ordnance Survey data © Crown copyright and database right 2022.

File Location: C:\Users\alexj\Documents\West Berks Local Plan\GIS\West Berks - Cut Down File for Human Figures.qgz
Created by: alexj



KEY

- Modelled Change in 2037 NO₂ Concentrations with 2037 Pre-Submission Local Plan ($\mu\text{g}/\text{m}^3$)
- -0.1 to 0.1
- 0.2 to 0.4
- Modelled Road Links
- WBC Administrative Area



Client:
West Berkshire Council

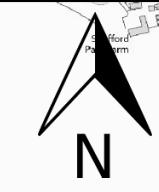
Project:
West Berkshire Council Pre-Submission Local Plan

Title:
Modelled Change in 2037 NO₂ Concentrations with 2037 Pre-Submission Local Plan - Great Shefford Area

Figure: 8-163
Date: 23/12/2022
Scale: 1:25,000

Drawn: AJ
Checked: JMR
Approved: AT

Contains Ordnance Survey data © Crown copyright and database right 2022.



KEY

- -0.1 to 0.1
- Modelled Road Links
- WBC Administrative Area



Client:
West Berkshire Council

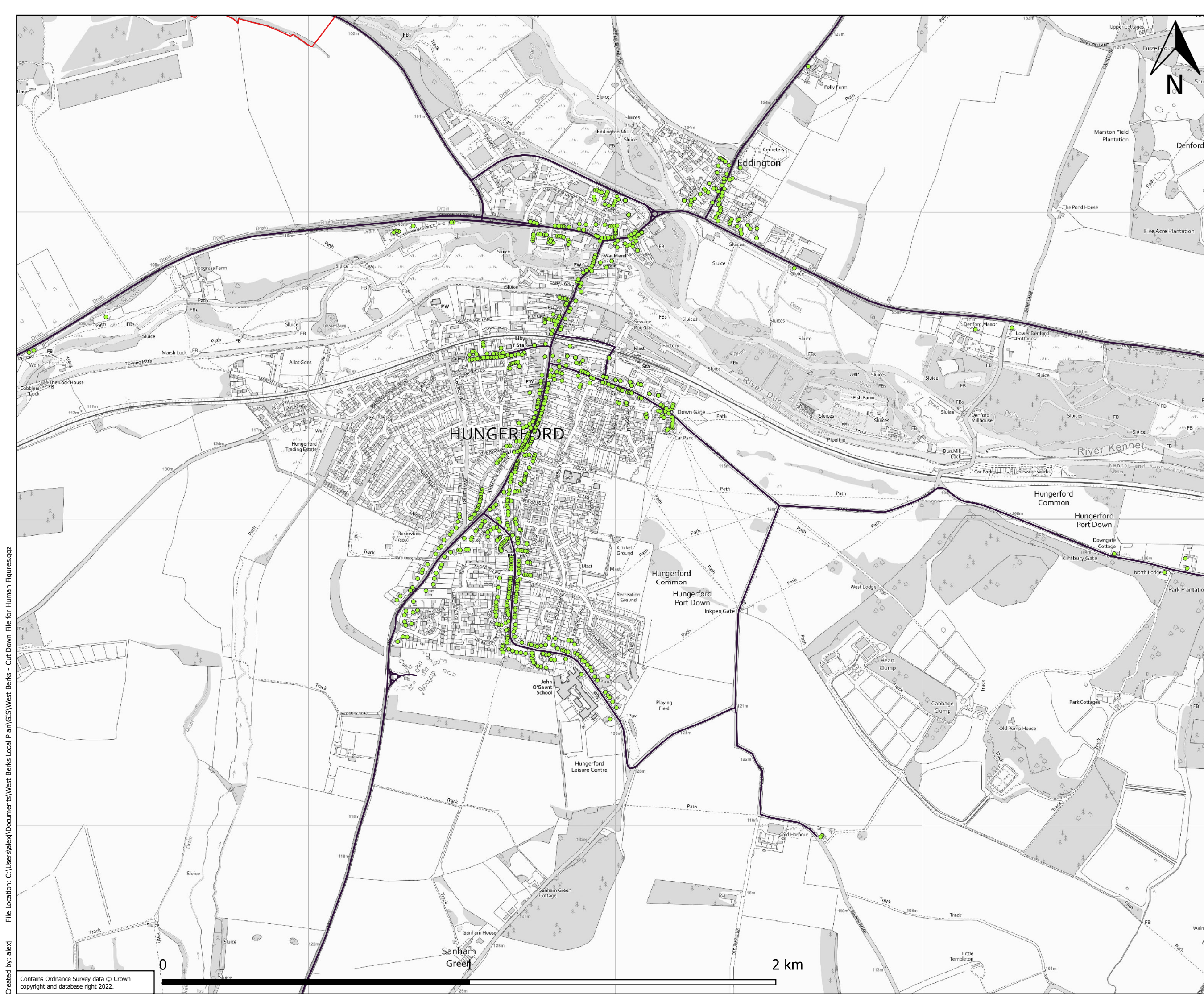
Project:
West Berkshire Council Pre-Submission Local Plan

Title:
Modelled Change in 2037 NO2 Concentrations with 2037 Pre-Submission Local Plan - Hungerford Newtown

Figure: 8-164 Drawn: AJ
 Date: 23/12/2022 Checked: JMR
 Scale: 1:12,500 Approved: AT

File Location: C:\Users\alexj\Documents\West Berks Local Plan\GIS\West Berks - Cut Down File for Human Figures.qg
 Created by: alexj

Contains Ordnance Survey data © Crown copyright and database right 2022.



KEY

- Modelled Change in 2037 NO2 Concentrations with 2037 Pre-Submission Local Plan ($\mu\text{g}/\text{m}^3$)
 - 0.1 to 0.1
- Modelled Road Links
- WBC Administrative Area



| | | |
|------------------|---|--|
| Client: | West Berkshire Council | |
| Project: | West Berkshire Council Pre-Submission Local Plan | |
| Title: | Modelled Change in 2037 NO2 Concentrations with 2037 Pre-Submission Local Plan - Hungerford | |
| Figure: 8-165 | Drawn: AJ | |
| Date: 23/12/2022 | Checked: JMR | |
| Scale: 1:11,000 | Approved: AT | |

Contains Ordnance Survey data © Crown copyright and database right 2022.

File Location: C:\Users\alexj\Documents\West Berks Local Plan\GIS\West Berks - Cut Down File for Human Figures.qgr
Created by: alexj