



Final chance to have a say on changing constituencies

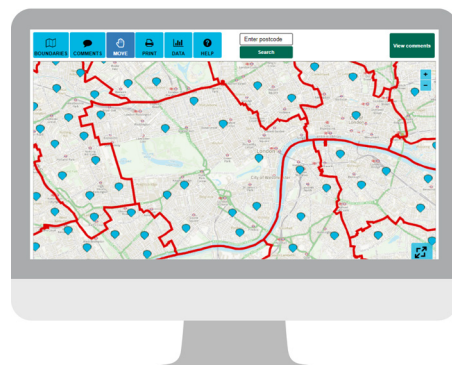
What is the 2023 Boundary Review?

- The number of people represented by an MP is much higher in some constituencies than in others.
- The Boundary Commission for England is required by Parliament to conduct an independent and impartial review of all constituencies in England.
- The 2023 Boundary Review will rebalance the number of electors in each constituency, and increase the number of constituencies in England to 543.
- The Commission has developed a new map of proposed boundaries based on feedback submitted by the public during two previous consultations.
- A final consultation, beginning on 8 November and ending on 5 December, has been launched on the new proposals. You are invited to view the revised proposals for new constituency boundaries and tell the BCE what you think.

How to have your say

- Go to **bcecreviews.org.uk** to view the proposed new constituencies and submit your feedback online before the consultation closes on 5 December.
- Prefer hard copy? A list of locations (often libraries and council buildings) where you can view the maps in paper format is available on the BCE website, or you can get in touch with the BCE for help in finding your nearest location.
- While it's easiest to send in your comments online, you can also submit your views via email or letter (see 'Get in touch' on the reverse of this sheet).
- Responses to the previous consultation are also available to view on **bcereviews.org.uk**.

Follow **@BCEReviews** to keep up to date with Boundary Review news



Frequently Asked Questions (FAQ)

Have your proposals changed since the first and second consultations?

Yes. During our previous consultations, we asked you to comment on our initial proposals, first published last year. We have listened to the feedback sent in and developed new suggestions for constituency boundaries.

Will this review favour one political party over another?

The Boundary Commission for England is independent and impartial. We do not take into account patterns of voting or the results of elections when reviewing constituency boundaries. The political parties' views on where boundaries should be do not carry any more weight than those of members of the public.

Will the changes affect my local council services - bin collections or schools, for example?

No. The boundary changes only relate to parliamentary constituencies (the area an MP is elected to represent in Parliament). Services and council tax in your local area are set by your local authority and this review does not change local authority boundaries.

Will the name of my constituency change following the review?

Generally, the more a constituency has changed, the more likely it is that the BCE will recommend a change of name. The Commission welcomes views on the naming of proposed constituencies during the consultation.

What happens after this final public consultation?

Once the consultation has closed on 5 December, the Commission will look at all the feedback sent in and consider whether any changes should be made to the revised proposals for constituency boundaries.

When would the proposed changes take effect?

Our final recommendations will be submitted to Parliament by 1 July 2023, and the new constituencies will take effect at the next General Election thereafter.

Still have questions? Get in touch:



020 7276 1102

information@boundarycommissionengland.gov.uk



Boundary Commission for England
35 Great Smith Street
London
SW1P 3BQ



boundarycommissionforengland.independent.gov.uk