

2 Housing Sites

Hungerford

Policy HSA 18

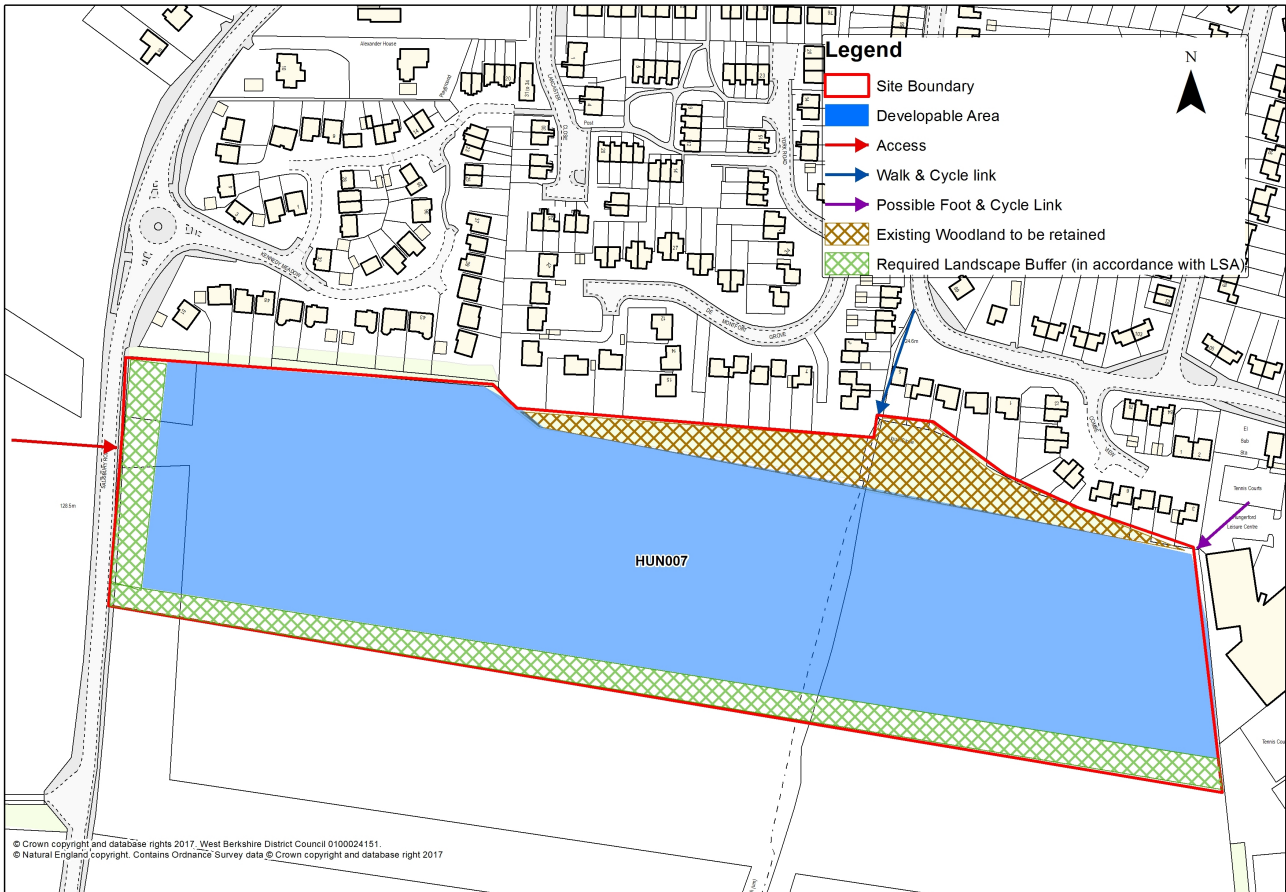
Land east of Salisbury Road, Hungerford (site reference HUN007)

The site has a developable area of approximately 5.7 hectares. The development will be delivered in accordance with the following parameters:

- The provision of approximately 100 dwellings with a mix of dwelling sizes and types.
- The site will be accessed from the A338, with a widening of the footway alongside the A338 to the site.
- The retention and enhancement of the existing footpath link from the site to the town centre and the provision of additional footpath and cycleway links to locations including the schools and leisure facilities.
- The scheme will be informed by an archaeological desk based assessment as a minimum and field evaluation if required to assess the historic environment potential of the site.
- The retention of the Public Right of Way through the site.
- The scheme will be developed in accordance with the Landscape Sensitivity Assessment (2011) and will include:
 - The creation of a woodland buffer to define the new edge of the settlement.
 - Careful design to enhance the gateway approach to Hungerford and to respect the site's semi-rural location.
 - The retention of views through the site to the wider landscape.
 - The retention of existing mature tree cover.
- The scheme will comprise a development design and layout that will be further informed by a full Landscape and Visual Impact Assessment (LVIA).
- Provision of permanent allotments in association with the development of the site will be explored.

Housing Sites 2

Land east of Salisbury Road, Hungerford - Policy HSA18

**Delivery and Monitoring - Policy HSA18**

This site is expected to deliver early and to contribute immediately to the supply of land needed to demonstrate a five year housing land supply. The delivery of the site will be monitored and reported in the Council's AMR.

Settlement Boundary

2.48 The settlement boundary of Hungerford has been redrawn as follows.

- Boundary moved around the developable area of allocated site HUN007.
- Boundary altered to include existing development at Smitham Bridge Road/North Standen Road.
- Boundary altered to follow curtilage along the canal to the west of Hungerford.
- Boundary altered to include HUN021 (site too small to allocate and has planning permission for 2 dwellings).

2.49 This is shown on the Policies Map and a map of Hungerford can be found in Appendix 6.