



What do I have to pay for and what will it cost?

As the developer of the site it is your responsibility to pay for all archaeological work required. All archaeological firms operate on a commercial basis. You are advised to contact at least three firms to obtain quotations.

What happens if something important and unexpected is found?

In very rare cases, such as where nationally important remains are found, English Heritage has the power to recommend the site for legal protection. In this case development would halt, but you would be financially compensated. In most cases the archaeology service will work with you and your archaeologist to ensure that finds are properly recorded before the development continues. If human remains are uncovered there are certain legal requirements that must be met including their sensitive removal. The archaeology service will be happy to advise you further.

Who can carry out archaeological work for me?

There is a wide range of professional archaeological contractors operating in Southern England. If you need to find an archaeologist we would advise that you contact the Institute for Archaeologists (0118 378 6446 or www.archaeologists.net) who can supply a list of Registered Organisations.

Who owns objects found on a site?

These belong to the landowner, but we would encourage the donation of all finds to the West Berkshire Museum. Your archaeologist will deal with ownership of finds on your behalf, and with your approval, make arrangements for them to be deposited at the Museum.

What happens if 'Treasure' is found?

By law, certain types of finds have to be declared to the Coroner. You can find out more about this on the West Berkshire website or visit the Portable Antiquities Scheme website www.finds.org.uk.



Contact Information

West Berkshire Archaeology Service
West Street House, West Street
Newbury RG14 1BZ

Tel: 01635 519534 Fax: 01635 519811
email: archaeology@westberks.gov.uk

More information about archaeology within the planning process can be found at our website - www.westberks.gov.uk/archaeology

West Berkshire Council is committed to equality of opportunity, and will treat everyone with respect regardless of race, disability, gender, age or sexual orientation. If you require this information in a different format, such as audio tape or in another language, please ask an English speaker to contact the Archaeological Officer on 01635 519534 who will be able to help.

WB/CS/SO/1110

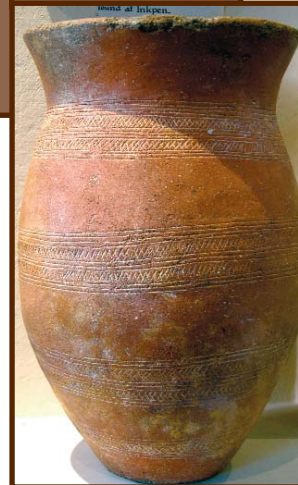
Our past is precious
Treasure and enjoy it



Archaeology and Planning



Protecting our past



Archaeology and Development

West Berkshire's archaeological resource is comprised of a wide range of components: buried features and sites, objects, earthworks, structures, buildings, historic landscapes, towns and villages. It is a finite resource and once destroyed cannot be replaced. Development activity, at whatever scale, can result in the destruction of valuable archaeological sites and information - *Information about our past and the history of our communities.*



The archaeology service provides advice on all development proposals in West Berkshire to ensure that historic remains are not needlessly or thoughtlessly destroyed. Government planning guidance makes it clear that development should not result in damage to sites and landscapes of archaeological significance.

Is my site of interest?

Pre-application discussions can save you both time and money. Early discussions with the archaeology service will provide guidance as to whether a site contains any known archaeological interest or whether it has significant archaeological potential. Confidential advice and information about the archaeological background to your development proposal can be provided, and where appropriate a programme of assessment, evaluation and mitigation can be agreed.



Understanding the archaeology and history of the proposed development site and its context can often have positive effects in terms of site layout, design, use of materials and landscaping that result in more attractive and more sustainable developments.

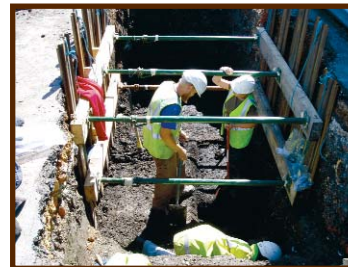
What happens if my site is of archaeological interest?

There are 3 options:

1. More archaeological information may be needed

In some circumstances your site may be of interest, but there may not be sufficient information available to allow an informed decision to be made about the impact of your development on any remains present. You may be asked to provide more information, an archaeological assessment or field evaluation to support your application.

Archaeological assessment usually involves researching historical maps and documents and other desk based sources. Field evaluation can involve the excavation of test pits or trial trenches or the use of non destructive prospecting techniques (ie geophysical survey). In all cases assessment and evaluations should be undertaken by a professional archaeologist working on your behalf. The resulting information will then be used to decide whether or not your development can proceed and what mitigation measures might be appropriate.



2. Development cannot proceed

In some cases, where nationally important remains exist on a site, the presumption will be to refuse any development proposal that will result in their damage or destruction. In these circumstances the archaeology service may wish to discuss the options for positively managing your site.

3. Development can proceed but subject to archaeological work and/or design amendments



If the site contains archaeological features or deposits of archaeological interest, but which are not of national importance, then

development may be allowed to proceed if accompanied by archaeological mitigation works. These may take the form of an archaeological excavation, building recording or other survey work, or on occasion may involve archaeological supervision (watching brief) of the excavation of groundworks.

There may also be circumstances where it will be clear that amendments to the proposed design could limit damage and may be required as part of any permission granted.



How do I know what needs to be done?

The scope of all archaeological work must be agreed in advance with the archaeology service. We are here to help you devise an appropriate scheme for your site.